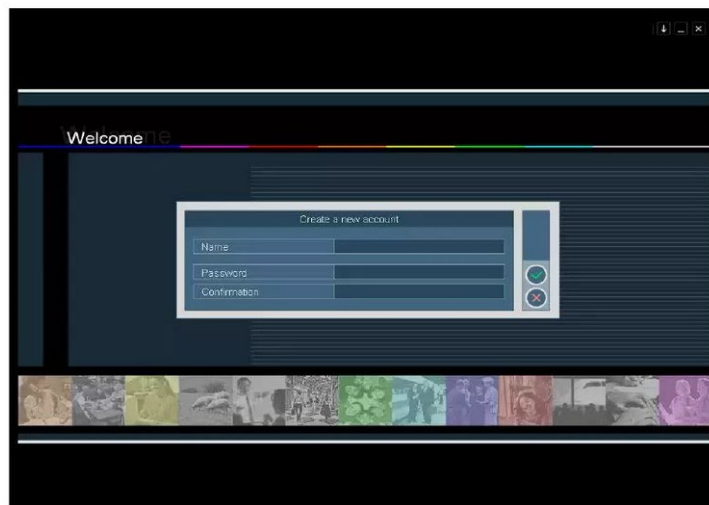


Language Learning software *Tell me More*

Step 1 - Creating an account

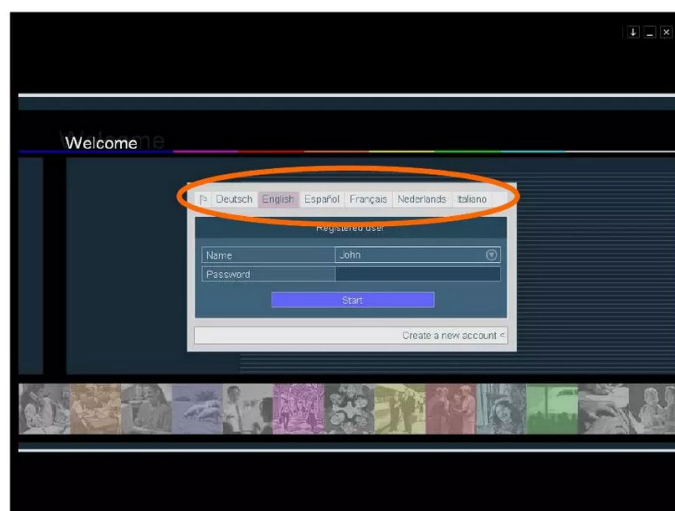
Open the Tell me More program on a computer in the language lab and register. Make a note of your login information (username + password) because only you will have access to your account. Once you are logged in, you can continuously track your learning progress.

TELLMEMORE®



Step 2 - Select menu language

In the top menu bar, you can select the language in which the explanations and translations should be displayed.



Step 3 - Choice of language for learning

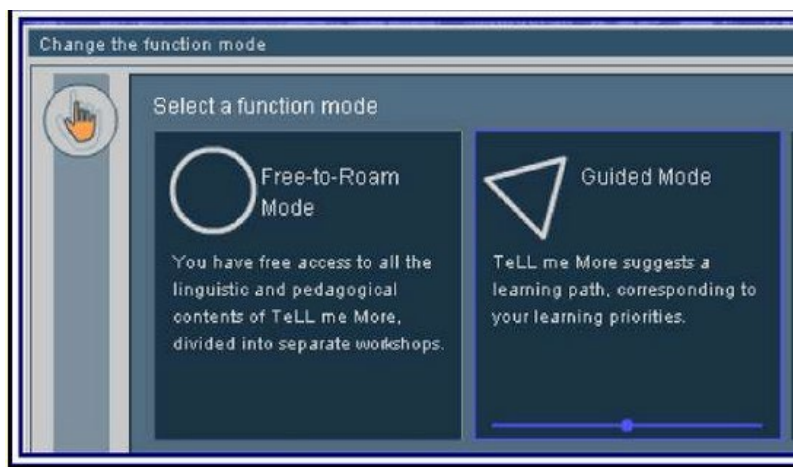
Now you can select the language you want to learn and the corresponding lesson package or CEFR level:

Languages to learn	Lesson package	CEFR level
German	Complete Beginner	(A1)
British English	Beginner	(A1-A2)
Spanish	Intermediate	(A2-B1)
French	Intermediate +	(B1-B2)
Italian	Upper Intermediate	(B2-C1)
	Advanced	(C1)
	Business	(B1-B2)
	Business +	(B2)
	Business ++	(B2-C1)

You cannot see the CEFR levels in the program; the information above was added by the zhb Foreign Languages Department based on the topics, vocabulary and the level of difficulty.


Step 4 - Selecting the working mode

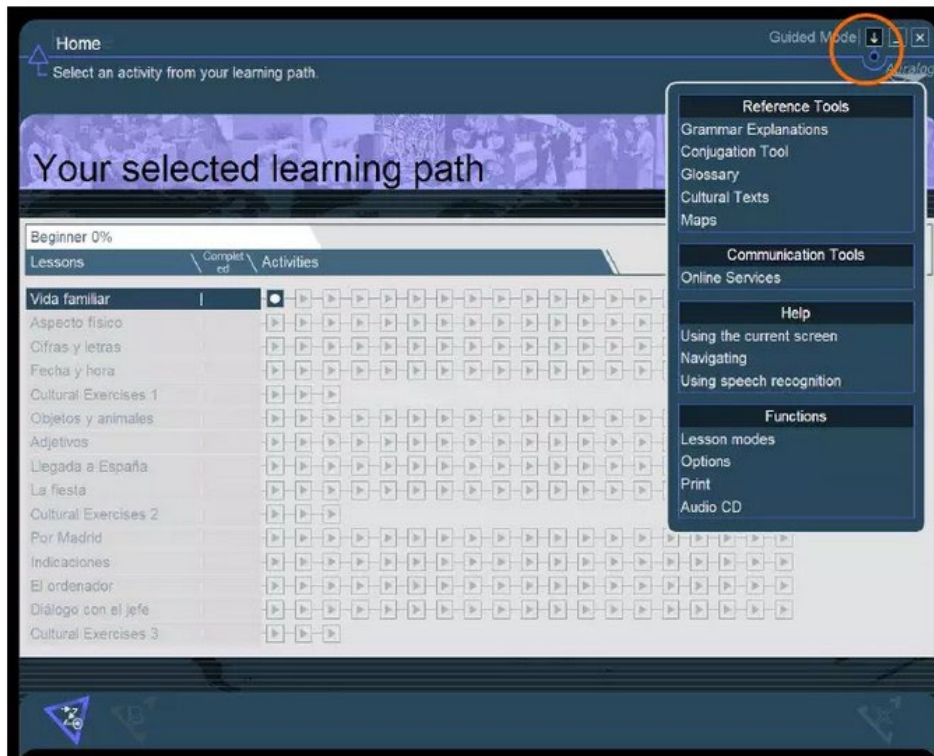
The program offers two function modes:



Free-to-roam mode	Guided mode
<ul style="list-style-type: none"> ▪ Free access to learning content, available through various workshops; ▪ Topic based learning using lessons and exercises from the "topics" workshop ▪ Learning focused on a specific language skill or area of knowledge like: <ul style="list-style-type: none"> ➢ cultural skills ➢ vocabulary ➢ grammar ➢ listening and speaking ➢ reading and writing ➢ results 	<ul style="list-style-type: none"> ▪ The program suggests a learning path corresponding to your personal learning goals; ▪ Progressive learning based on specific subject areas, organized in order of increasing difficulty; ▪ Learners have accessed to standard learning courses based on the lessons.

Step 5 - Choise of learning option

In the top right-hand corner you will find an arrow  always available under 'Tools and Info'. Here you will find the following options:



- Learning tools
 - Grammar explanations (1)
 - Conjugation tables (2)
 - Glossary (3)
- Communication tools
 - ~~Online service~~
- Help
 - Help for the current screen
 - Help with navigation
 - Help with speech recognition
 - Additional features
- Additional features
 - Working modes
 - Options (4)
 - ~~Print~~

(1) Grammar explanations

You can select the difficulty level and the grammatical category.

(2) Conjugation tables

You will find a few verbs with conjugations tailored to your level.

Modes and tense > Please note! All levels are available here.

(3) Glossary

Words listed alphabetically with their English translations. You can browse by letter.

(4) Options

General options:

- Language detection
- Timer
- Word translation
- Sound
- Automatic help activation
- Animations in Tell me More

Workspace options:

- Dialogue
- Pronunciation
- Picture-word association
- Dictation
- Crossword puzzles
- Word search
- Video and questions about the video

Working mode options:

- Custom mode: Personal learning goals
- Listening / Speaking / Reading / Writing

User options:

- Change your password

Have fun and enjoy working in the language lab!

The zhb Foreign Languages Team